



Specification for

QSC58ZJ1-APC QSC58ZJ1-UPC

Field Installable Connector (Type 58-1)



Prepared by	Proofread by	Approved by
Liu Jian	Liu Hongyu	Huang Xiaoyu

Revision List

Revise Date	Author	Document Rev.	Modification Record
2020-05-10	Zeng Xiaoyuan	V1.0	First writing
2021-8-4	Liu Hongyu	V2.0	Add more detailed description & modify format
2022-08-12	Liu Hongyu	V2.0A	Update LOGO

Chongqing Lixun Communication Device Co., Ltd.

<http://www.lxftth.com>



1. Description

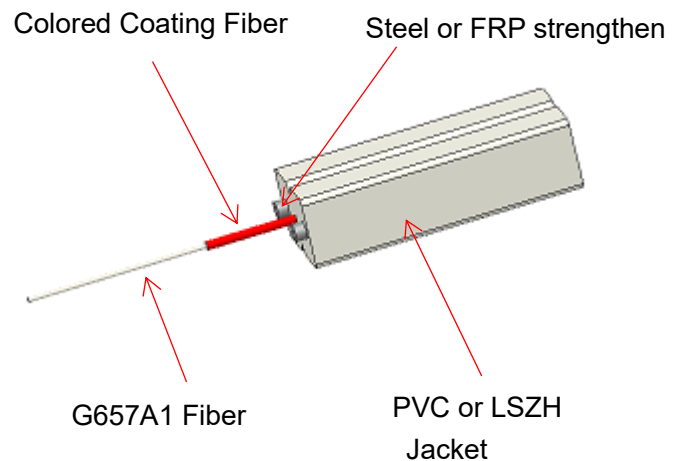
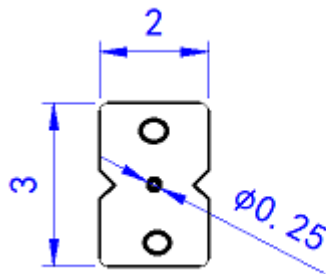
This specification defines the characteristics of SC/UPC, SC/APC Field Installable Connector (FIC Type SC58-1) with G652D/G657A1/G657A2 fiber in a pre-polished SC ferrule (UPC or APC). This FIC is produced by Chongqing Lixun Communication Device Co., Ltd. which is designed to be used with drop cable of 3.0mmx2.0mm dimension, and also used on D3.0mm & D2.0mm indoor cable.

2. Outline Drawing of FIC

-

3. Outline Drawing of Cables

The outline of the fitted butterfly flat drop cable and 3.0mm simplex cable are as follows:



4. Overall Performance

The FIC fulfills the following spec. and Insertion Loss is tested 100%. The return loss is produced to be as low as APC: -55dB, UPC:45, so the FIC could bring lowest disturbance to the FTTx system.

No.	Item Name	Description
1	Insertion Loss (dB)	Max. ≤ 0.5 dB, Typical ≤ 0.3 dB
2	Return Loss (dB)	Max. APC ≤ -50 dB, Typical ≤ -55 dB Max UPC ≤ -40 dB, Typical ≤ -45 dB
3	Ferrule End Face	A Zone no scratches at 400X
4	3D Interferometry	Complies to IEC 2009
5	Average Assembling Time	≤ 3 min
6	First-Time Done Yield Rate	$\geq 95\%$
7	Re-Operation Times	Max. 5 times
8	Repeatability (± 0.2 dB)	$\geq 90\%$
9	Appearance	No Defects
10	Tensile Strength	> 30 N

5. Polished connector surface

Page 3 of 5



6. Material – FIC Housing & Dust Cap

The FIC shall adopt engineered resin that meet the demand of RoHS and could withstand the temperature changes of the spec. values.

7. Material – Matching Gel

The matching gel in FIC is well enough for 5-time re-operation in the field. The gel should also meet the RoHS requirement and providing superior optical performance

8. Working Conditions

The FIC could be operated normally during the following environmental conditions:

Item Name	Spec. Value
Operating Temperature	-20°C~+75°C
Storage Temperature	-40°C~+85°C

9. Product Appearance



9. Product Drawing

